



CITTA' di AVIGLIANA

REGIONE PIEMONTE

PROVINCIA di TORINO

**VARIANTE STRUTTURALE al PRG Vigente
relativa alle Borgate
Ambiti Eb, Ct, Fip6 e Fip8**

PROGETTO DEFINITIVO

3. TAVOLE

**3.3 TAVOLE DI PROGETTO: EDIFICI ED ELEMENTI
CONNOTANTI GLI AMBITI Eb (scala 1:2000)**

URBANISTI INCARICATI:

Arch. Flavia BIANCHI Arch. Claudio MALACRINO
Studio Tecnico Associato
SEDE LEGALE: Via Principi d'Acaja, 6
10143 TORINO

SEDI OPERATIVE:
Via Principi d'Acaja, 6 - 10143 TORINO
Tel./fax 011.482826 - 482314
Via Peyron, 12 - 10143 TORINO
Tel./Fax 011.0200078 - 0200079
bianchi.malacrino @ tin.it
bianchi.malacrino @ fastwebnet.it

GEOLOGO INCARICATO:

Dott. Dario FONTAN



COLLABORATORI:

Arch. Anna TODROS

IL SINDACO


IL RESPONSABILE DEL PROCEDIMENTO

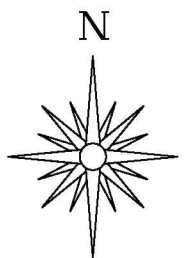
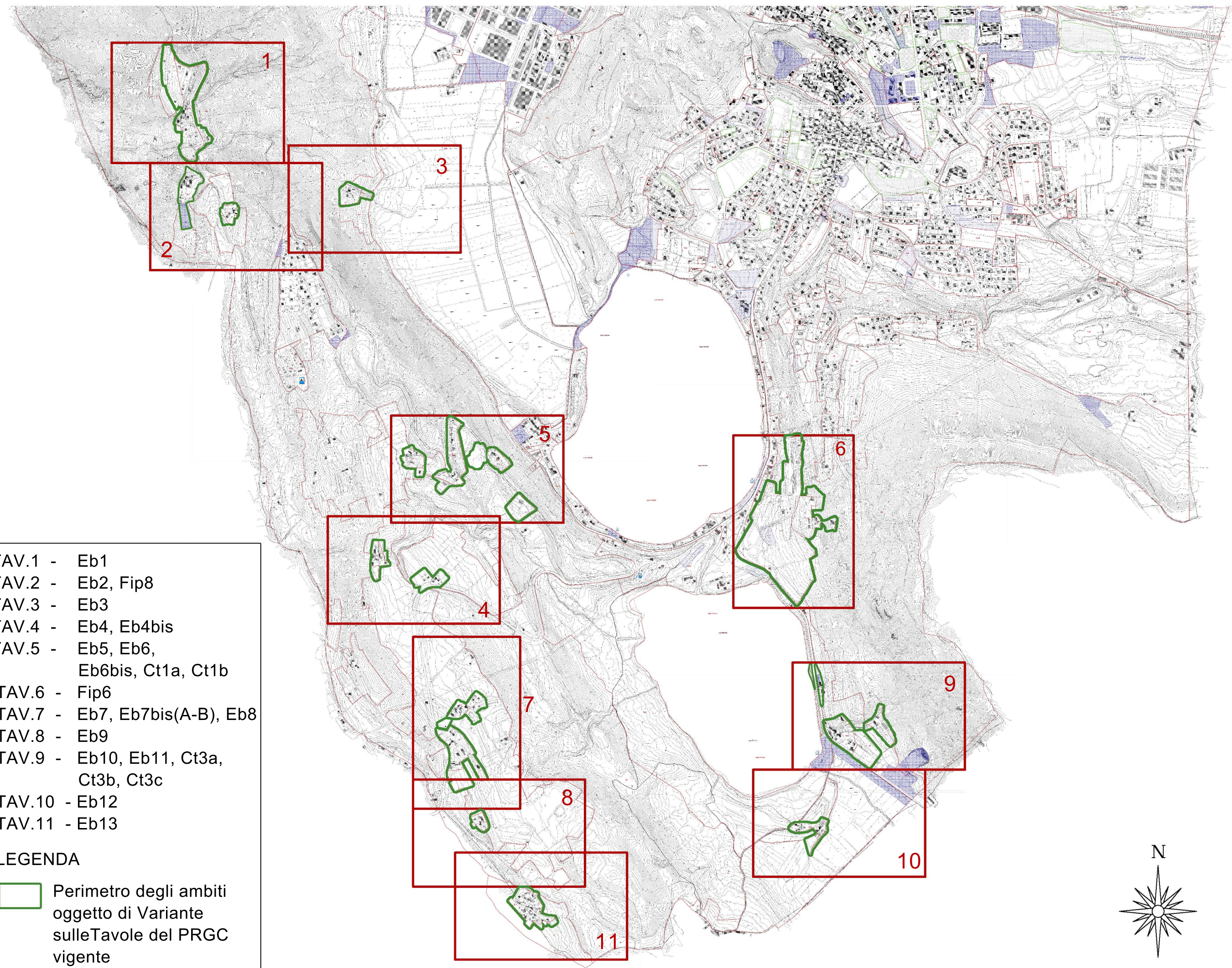
IL SEGRETARIO COMUNALE

Novembre 2013

- TAV.1 - Eb1
TAV.2 - Eb2, Fip8
TAV.3 - Eb3
TAV.4 - Eb4, Eb4bis
TAV.5 - Eb5, Eb6,
Eb6bis, Ct1a, Ct1b
TAV.6 - Fip6
TAV.7 - Eb7, Eb7bis(A-B), Eb8
TAV.8 - Eb9
TAV.9 - Eb10, Eb11, Ct3a,
Ct3b, Ct3c
TAV.10 - Eb12
TAV.11 - Eb13

LEGENDA

 Perimetro degli ambiti
oggetto di Variante
sulleTavole del PRGC
vigente










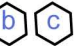

QUADRO D'UNIONE

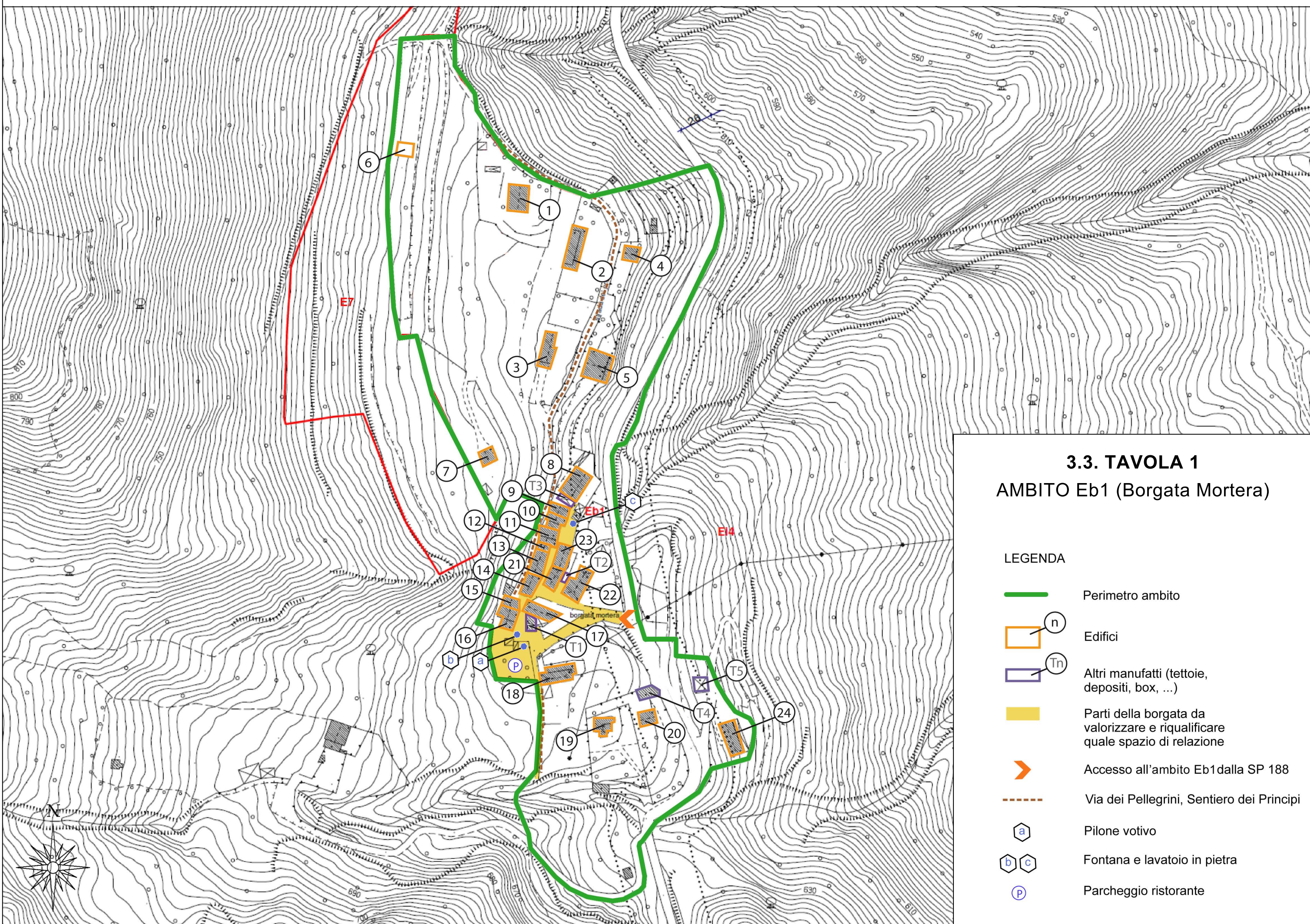
La base cartografica delle 11 tavole contenute nel presente elaborato è costituita dagli estratti delle tavole C.2 del PRGC vigente in scala 1:2000. Per la legenda della base cartografica si vedano le tavole C.2 del PRGC vigente.

3.3. TAVOLA 1

AMBITO Eb1 (Borgata Mortera)

LEGENDA

-  Perimetro ambito
-  Edifici
-  Altri manufatti (tettoie, depositi, box, ...)
-  Parti della borgata da valorizzare e riqualificare quale spazio di relazione
-  Accesso all'ambito Eb1 dalla SP 188
-  Via dei Pellegrini, Sentiero dei Principi
-  Pilone votivo
-  Fontana e lavatoio in pietra
-  Parcheggio ristorante

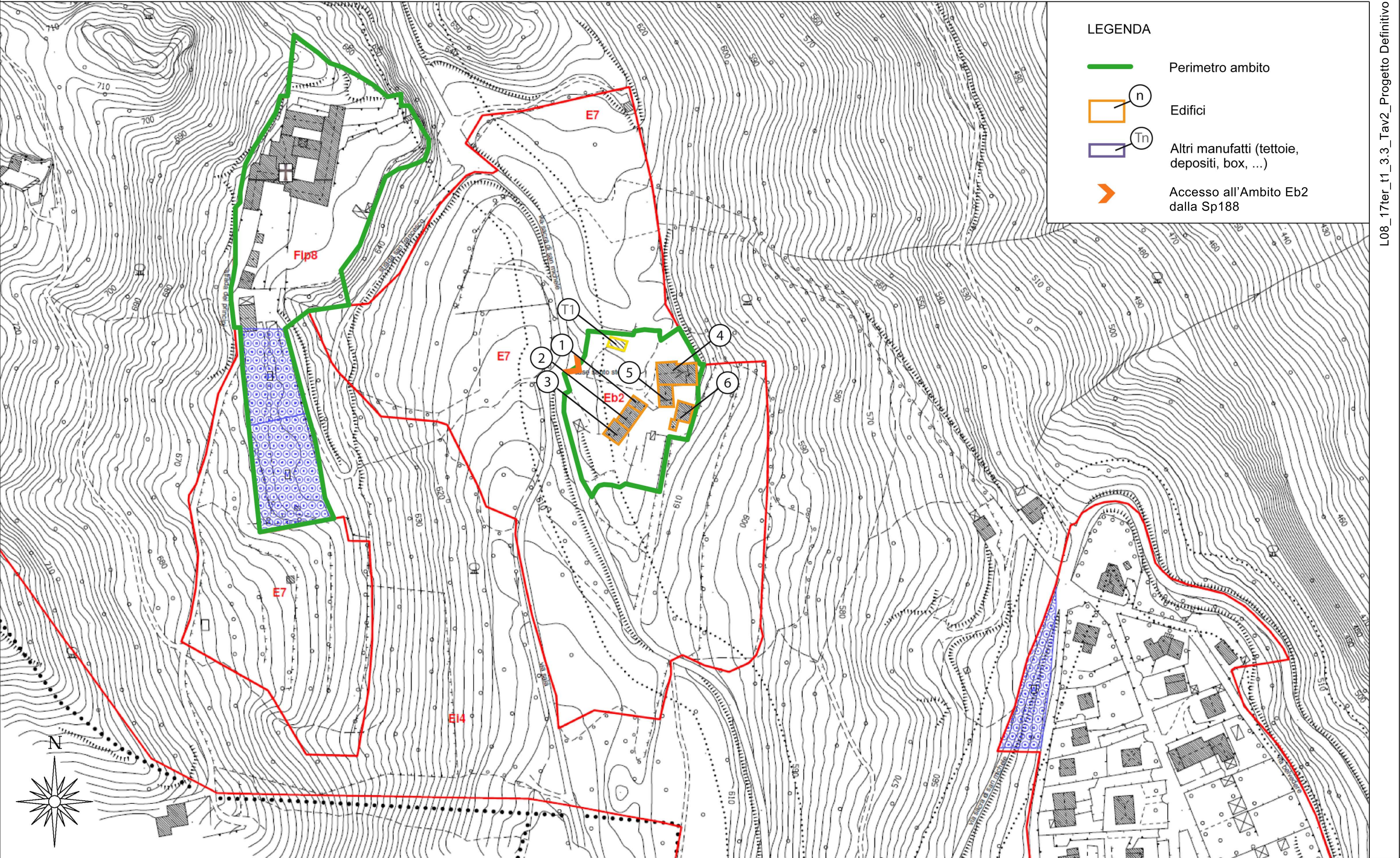


3.3. TAVOLA 2

AMBITO Eb2 (Case Santo Stefano)

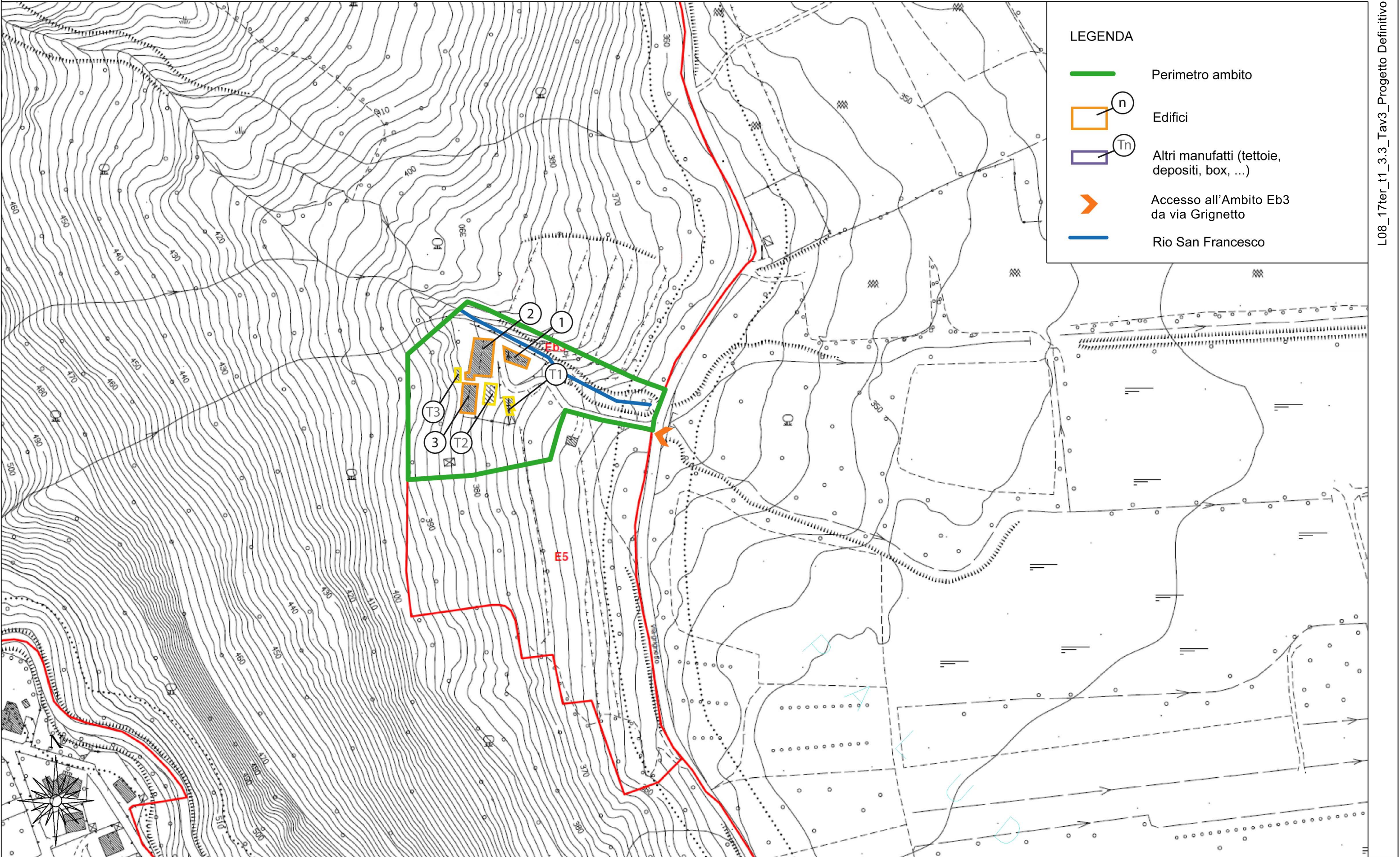
AMBITO Fip8 (Certosa di san Francesco)

scala 1:2000 0 10 100 mt.



3.3. TAVOLA 3
AMBITO Eb3 (Case Dino)

scala 1:2000 0 10 100 mt.

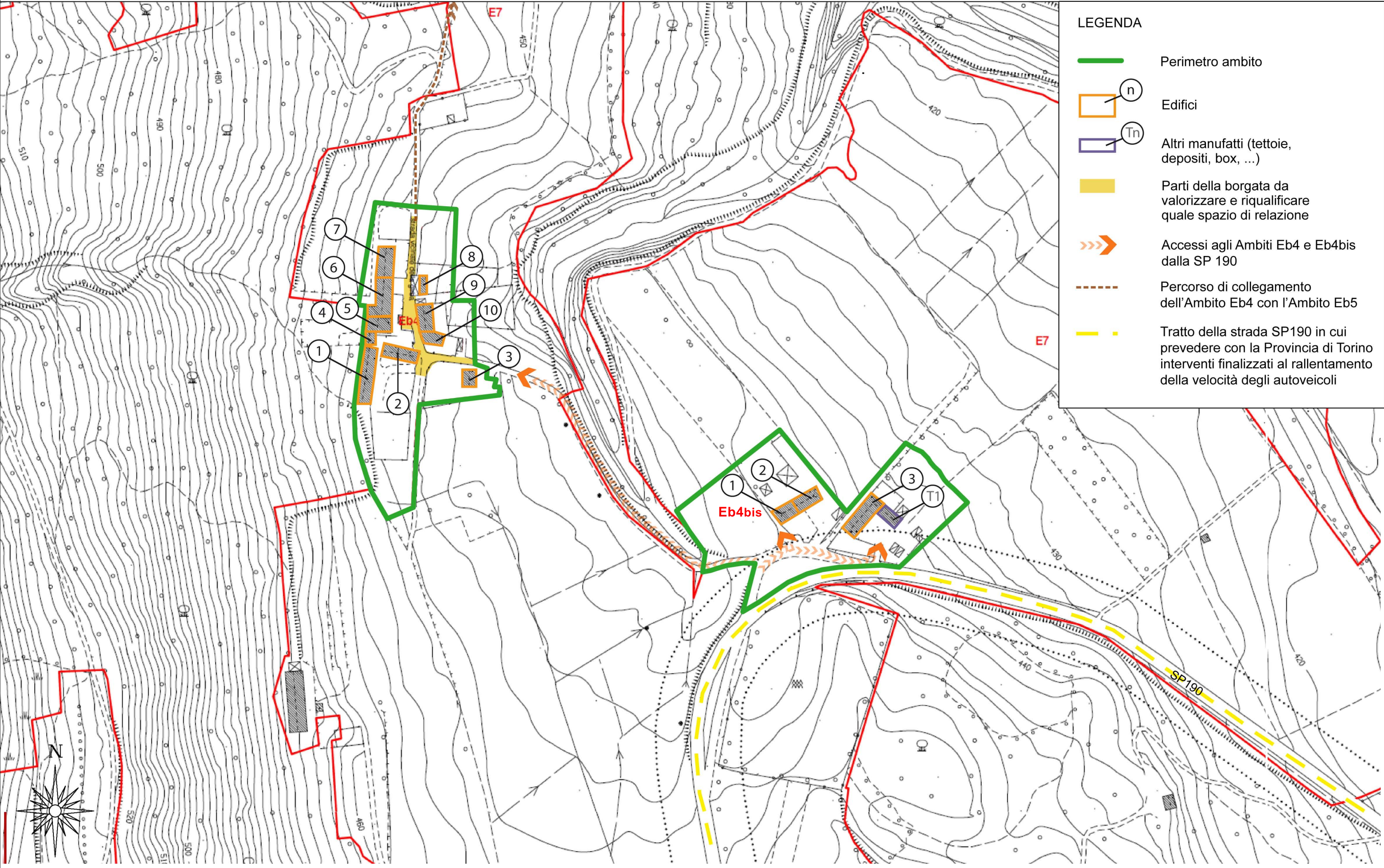


3.3. TAVOLA 4

AMBITO Eb4 (Borgata Girba)

AMBITO Eb4bis (c/o Borgata Girba)

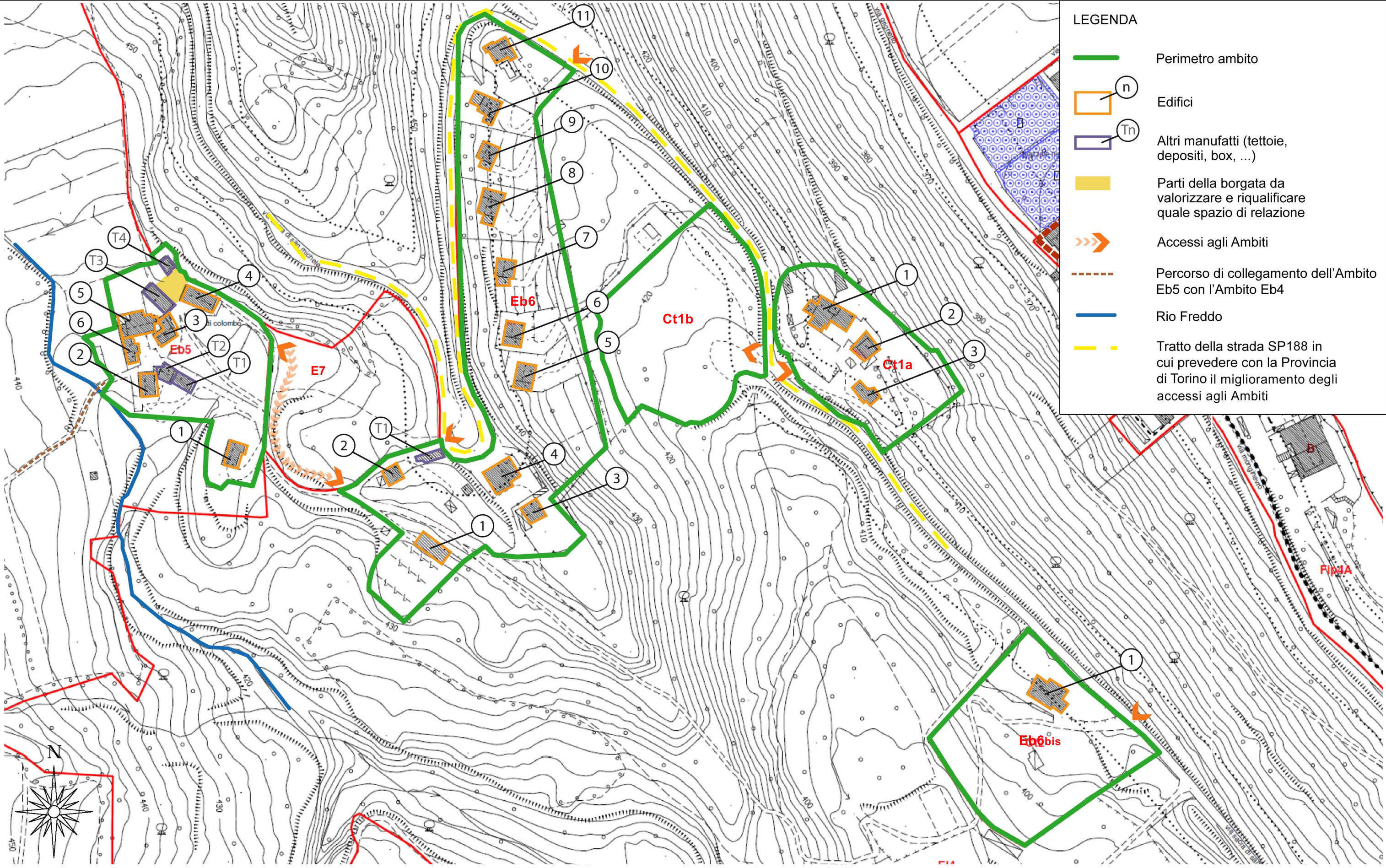
scala 1:2000 0 10 100 mt.

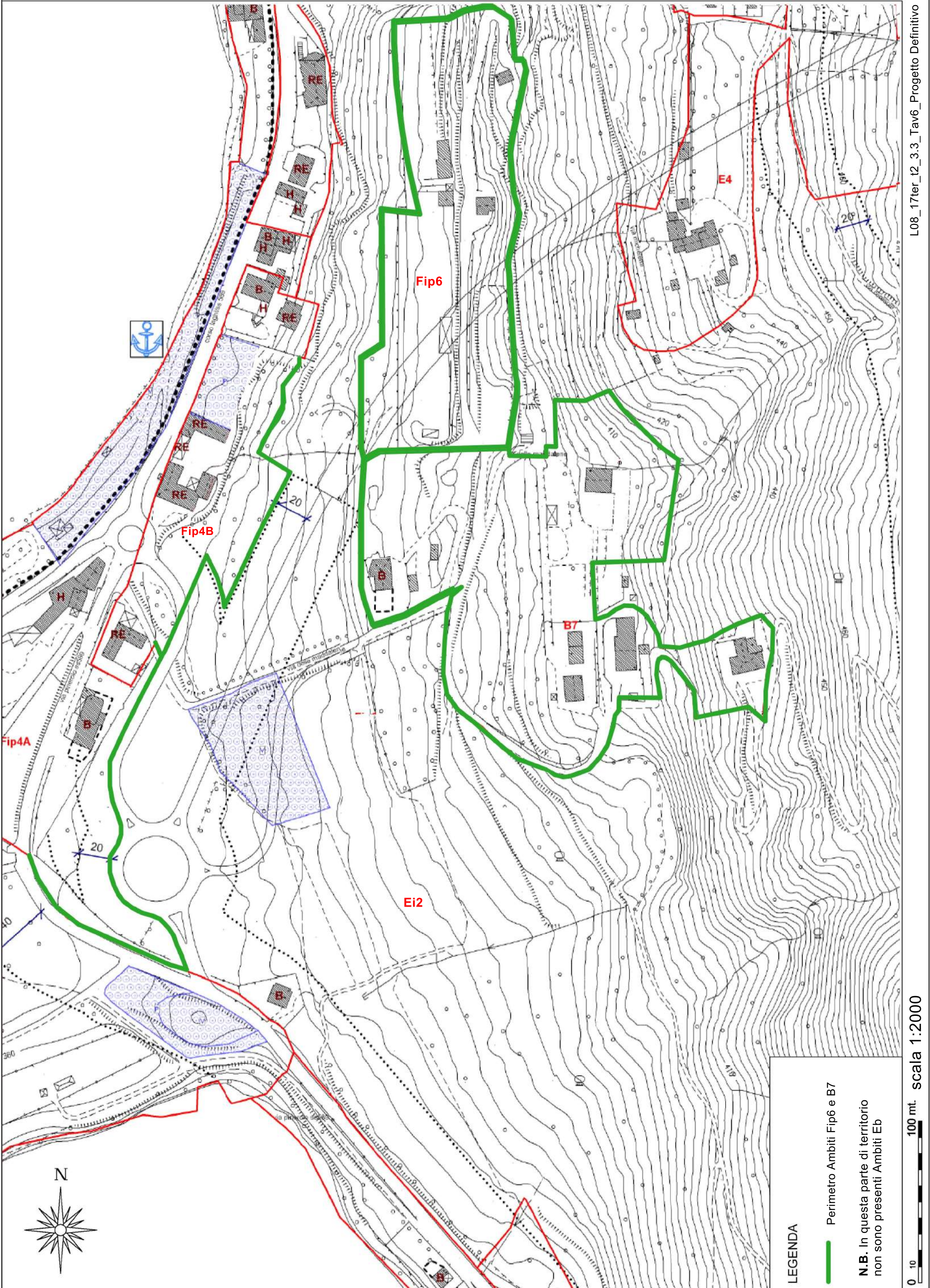


3.3. TAVOLA 5

AMBITO Eb5 (Borgata Tetti Colombo), AMBITO Eb6, AMBITO Eb6bis, AMBITO Ct1a, AMBITO Ct2b

scala 1:2000 0 10 100 mt.





3.3. TAVOLA 7

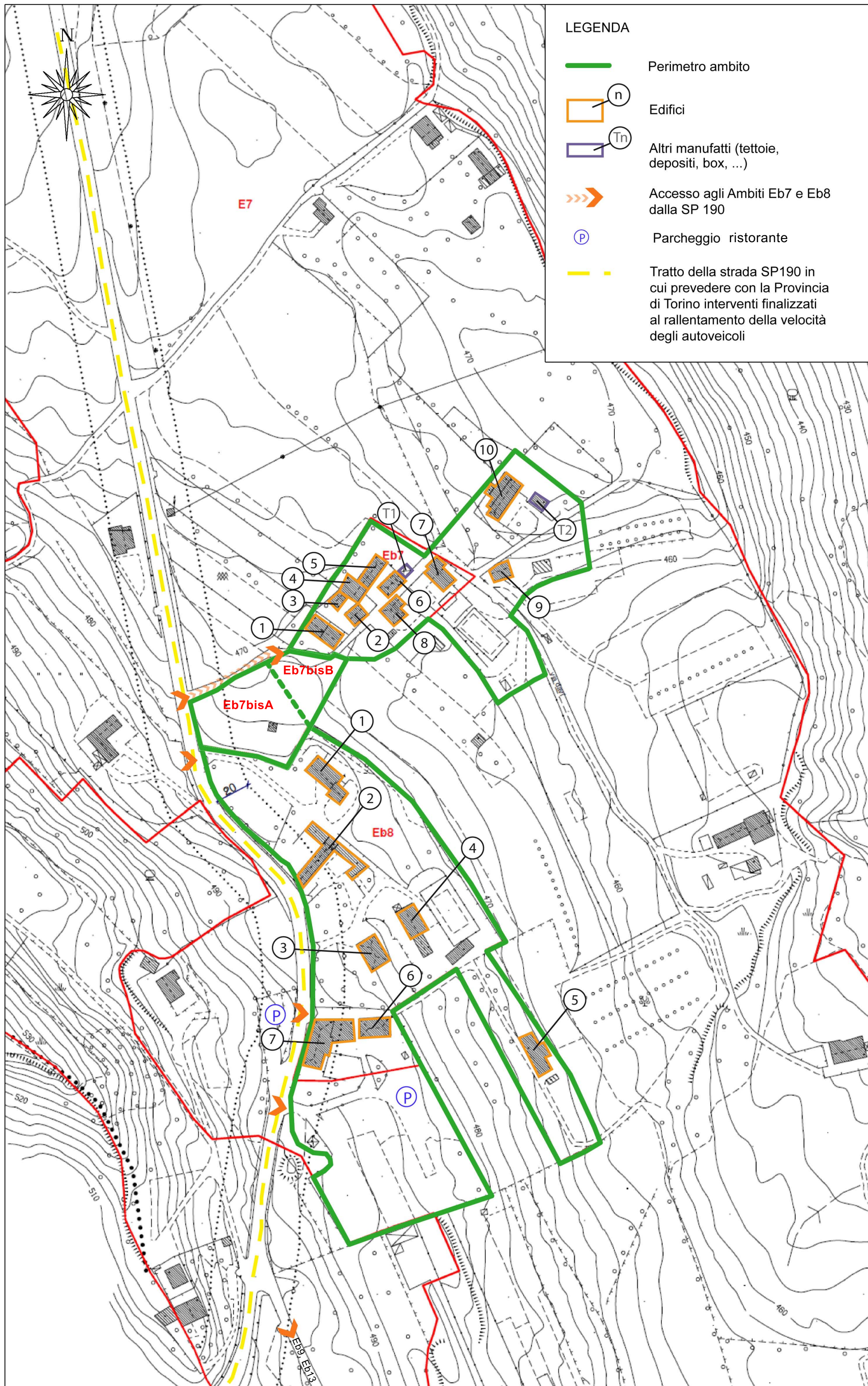
AMBITO Eb7 (Case Davi)

AMBITO Eb7bisA e AMBITO Eb7bisB

AMBITO Eb8 (Benna Bianca)

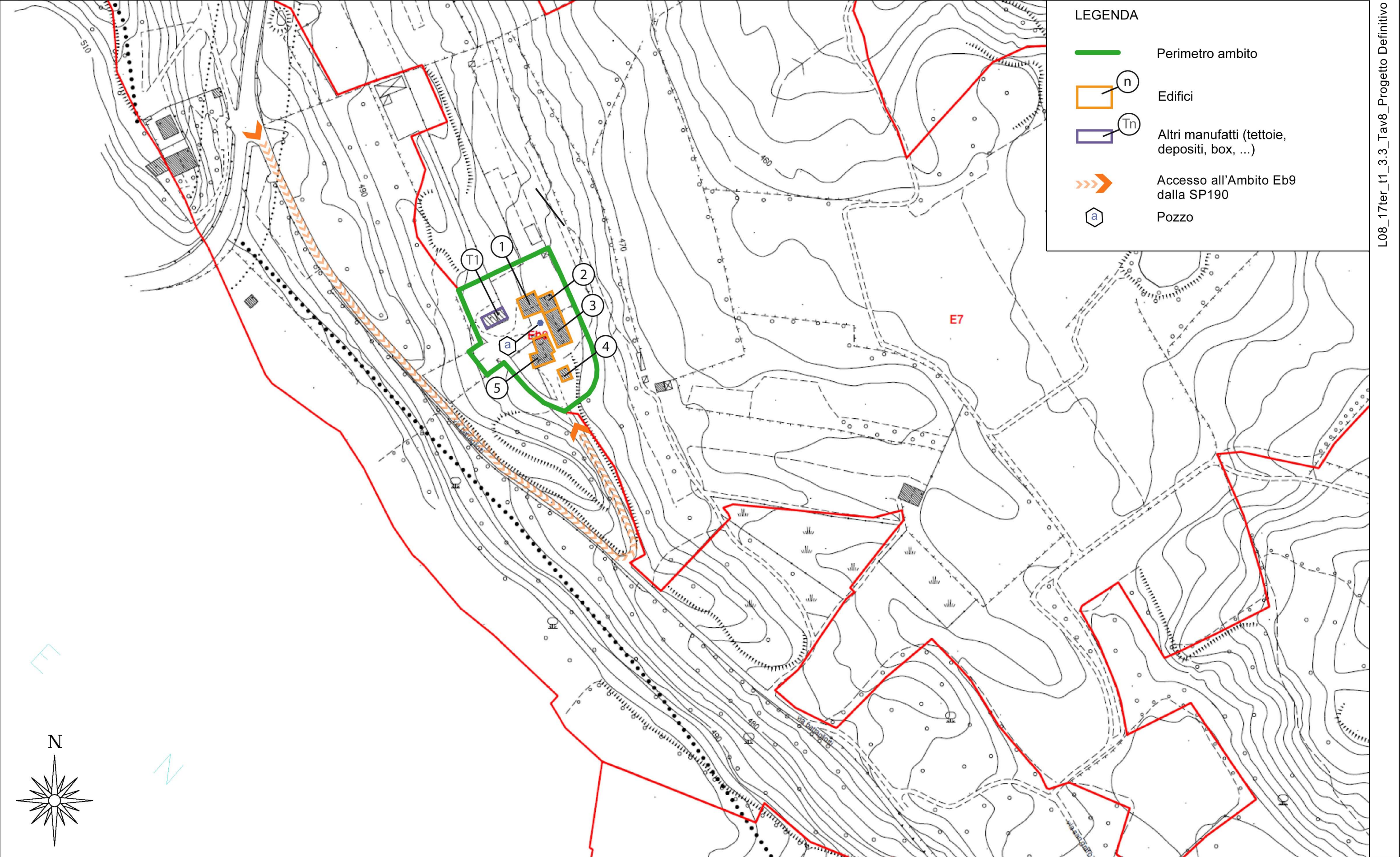
LEGENDA

- Perimetro ambito
- Edifici
- Altri manufatti (tettoie, depositi, box, ...)
- Accesso agli Ambiti Eb7 e Eb8 dalla SP 190
- Parcheggio ristorante
- Tratto della strada SP190 in cui prevedere con la Provincia di Torino interventi finalizzati al rallentamento della velocità degli autoveicoli



3.3. TAVOLA 8
AMBITO Eb9 (C.na Pogolotti)

scala 1:2000 0 10 100 mt.



3.3. TAVOLA 9

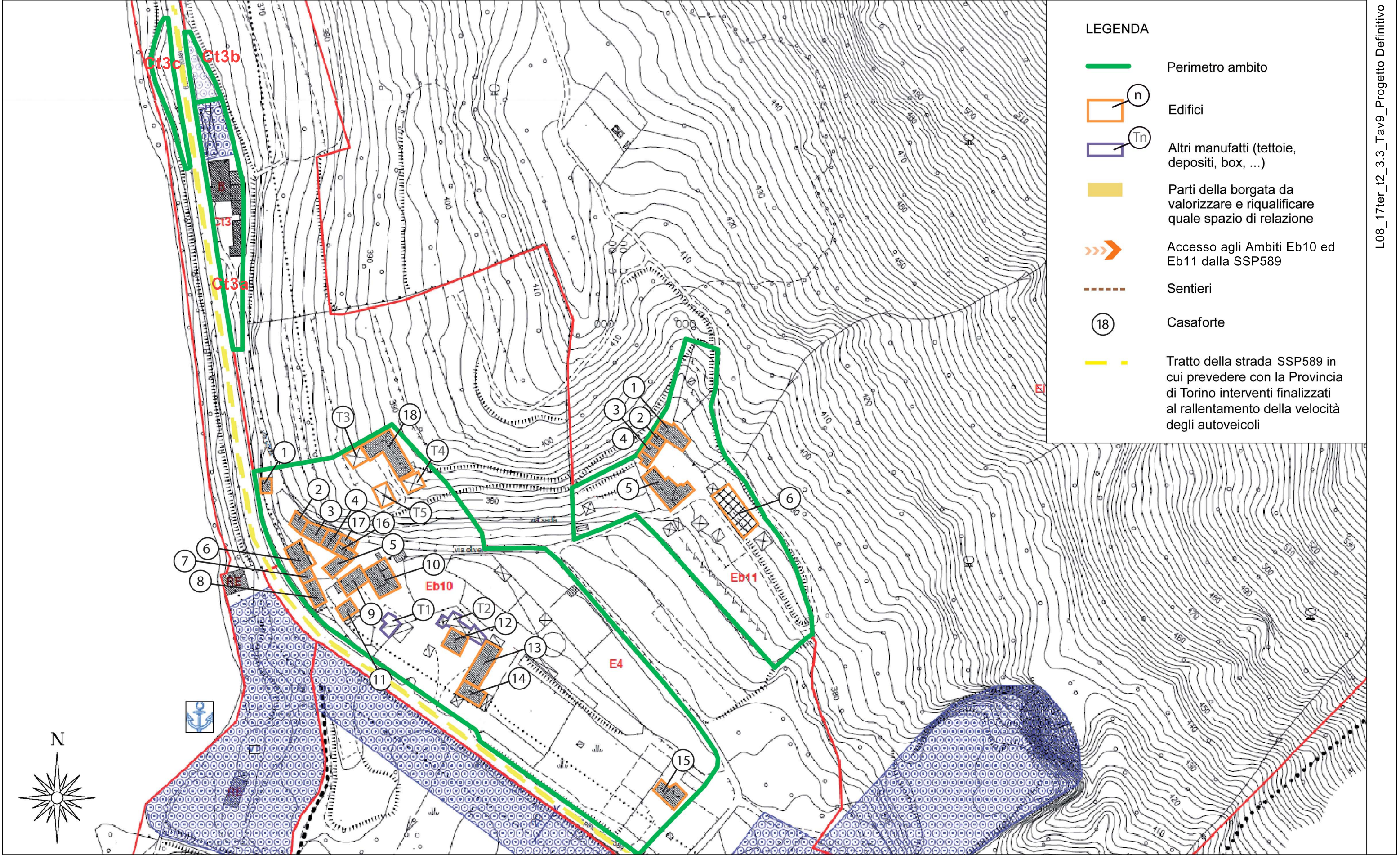
AMBITO Eb 10 (Borgata Sada)

AMBITO Eb11 (Borgata Olivero)

AMBITI Ct3a; Ct3b; Ct3c

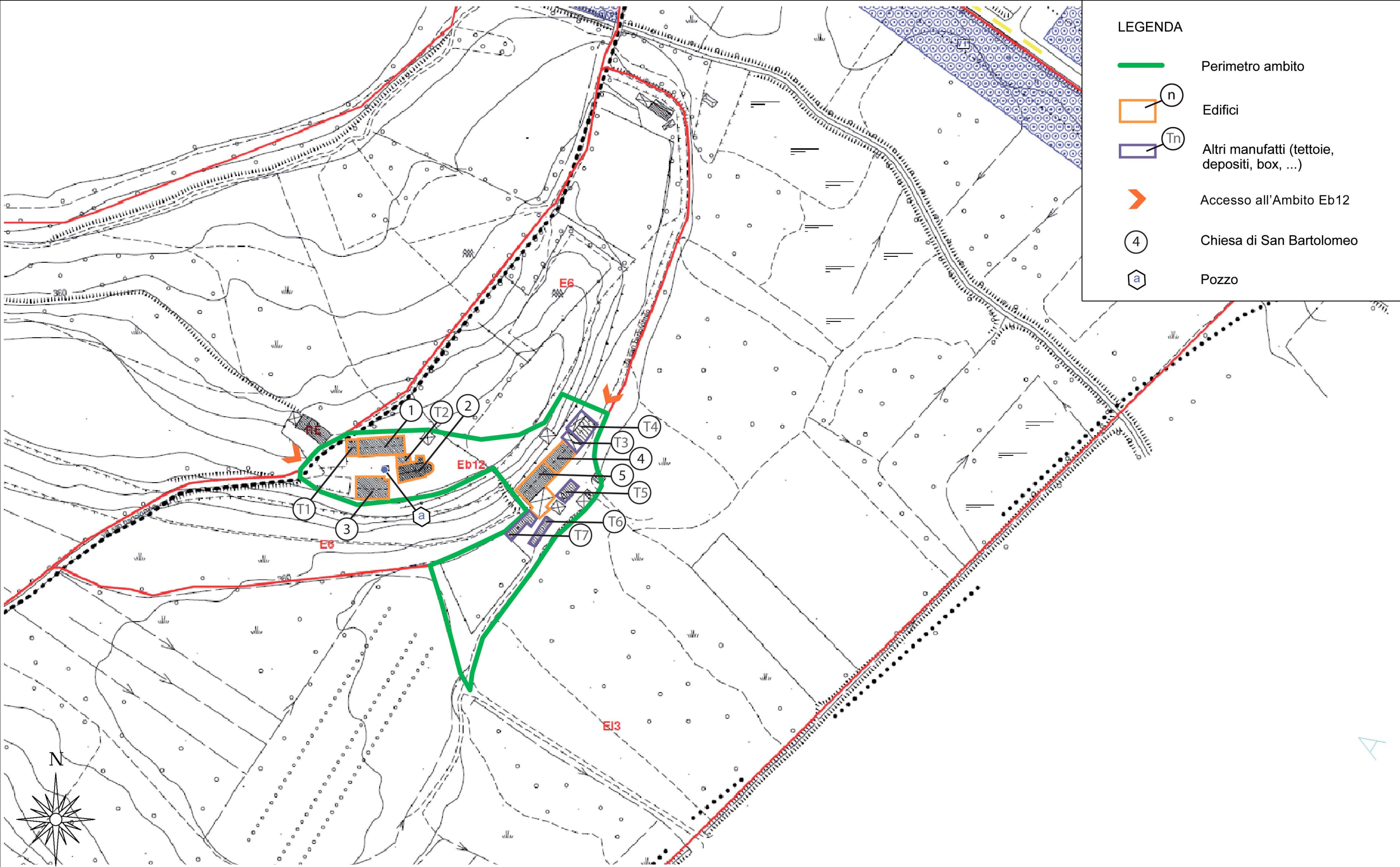
scala 1:2000

0 10 100 mt.



3.3. TAVOLA 10
 AMBITO Eb 12 (Borgata San Bartolomeo e C.na dall'Osta)

scala 1:2000 0 10 100 mt.



3.3. TAVOLA 11

AMBITO Eb13 (Borgata Battagliotti)

scala 1:2000 0 10 100 mt.

